

GoldenEar™

CANADA RETAIL PRODUCT CATALOG



The GoldenEar Voice

If an audio product were perfect, it would have no sound of its own. It would be invisible. It would have no “voice.” In the real world, DACs, amplifiers, turntables, and especially the transducers — microphones, phono cartridges, and loudspeakers — all have distinct sonic characters.

A competently finessed “voice” comes from consciously managing the sonic effect of every design decision and every part, and then coordinating the combined effect of all those many little imperfections into a whole, creating a voice with as little overt character as possible. At least, that’s the objective for all GoldenEar loudspeakers.

Speaker designers have different intentions as they set about fine-tuning a speaker. Recording studio monitors are often voiced to over-illuminate and intentionally provoke the engineer’s awareness of potential recording flaws, while some other speakers are voiced to grab your attention during the strange, emotional experience of listening while standing in a store.

The real difference between lesser and greater products is in their designers’ intentions, and in their ability to manage inevitable imperfections. Competent voicing doesn’t itself reduce the quantity of the imperfections, but rather it coordinates them into an extremely low-level, ignorable background with no features that shout for attention. That’s the goal shared by all GoldenEar speakers.

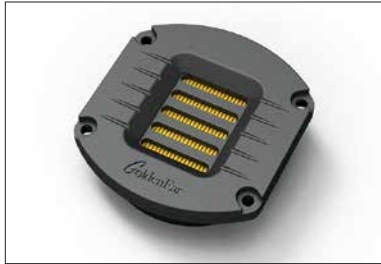


Technology

Several crucial components appear throughout the line, allowing GoldenEar speakers of all shapes, sizes, and configurations to sing with the same beautiful voice.

High-Velocity Folded Ribbon (HVFR™) Tweeter

Rather than pushing air like a traditional tweeter, an HVFR tweeter propagates soundwaves and moves the air by squeezing it with its accordion-like pleated diaphragm. Its efficiency, low mass, and large radiating area ensure lower distortion than other tweeter designs in its price range. These HVFR attributes contribute greatly to GoldenEar's effortless sound and 3D imaging. The Triton Reference, One.R, and BRX (Bookshelf Reference X) use a "Reference" version of this tweeter with a larger magnet structure for greater efficiency, control, and lower distortion.



Reference, these Long-Throw drivers produce powerful but nuanced bass. This highly efficient amp-driver combination also allows even modest audio/video receivers to achieve performance far beyond their rated power output.

Quadratic and Planar Bass Radiators

Passive radiators are a more sophisticated and costlier alternative to ported designs. Our approach increases the volume of air

the bass drivers "see" in the cabinet while greatly minimizing any negative effects and/or stresses within the speaker cabinet itself. Further, when ported woofers are subjected to demanding home-theater material, they can produce an unpleasant "chuffing" sound. This can't happen with a passive radiator — there's no pipe to whistle through. With GoldenEar's Quadratic and Planar Bass Radiator technology, the result is bigger, more muscular bass with fewer artifacts and more nuance.



High-Definition Cast-Basket/MVPP Midrange/Bass Drivers

For this crucial frequency range, nearly all GoldenEar speakers employ open but ultra-rigid cast-basket bass/midrange drivers, often in a D'Appolito array. A Multi-Vaned Phase Plug (MVPP) creates a single radiating surface for a more linear or even response. This technology contributes greatly to the uncolored sound that is so essential to GoldenEar's voice.



Tested by Ear and in our Anechoic Chamber

Every GoldenEar speaker is thoroughly tested both by ear and with our own anechoic chamber modeled after the one found in the world-renowned Nation Research Council in Canada. This allows us to accurately and comprehensively assess optimal driver, cabinet, and crossover specifications for each of our components and finished speakers. Today, there are many means of measuring speaker drivers and completed speakers via computers and analyzers. These test devices strive to "simulate" anechoic response or conditions. Though these tests may save considerable expense and space, there is no adequate substitute for a true anechoic room — the only verifiably controlled and consistent means of testing and optimizing loudspeakers. GoldenEar is one of the few fortunate loudspeaker manufacturers to have an anechoic chamber of its own.

Quadratic Bass Drivers

With their relatively long, narrow shape, these bass drivers are designed to maximize the cone surface area of GoldenEar's slim and attractive enclosures, which diminish unwanted signal reflections, smearing, and cabinet resonances. When coupled to the built-in amplification used in Triton's Three+, Two+, One.R, and



Triton Series Towers

The Triton Series epitomizes the beauty of the GoldenEar “voice” and clearly expresses our performance-driven value ethos. The Triton Three+ and up are “powered towers” with built-in powered subwoofers. While the bass gets bigger, and more powerful as you move up the line, all Tritons are full-range speakers, and all use GoldenEar’s superb High-Velocity Folded Ribbon (HVFR™) tweeter and MVPP Midrange/Bass drivers. The One.R and Triton Reference employ even more refined “Reference” versions of these drivers. All Tritons deliver superb performance in both two-channel stereo and multi-channel home theater systems with eerily realistic, three-dimensional imaging. Proper attention has been paid to ensure well-extended lows blend seamlessly with their utterly transparent mids and silky-smooth highs.

Triton Reference

\$15,000/pair

9.1" W x 19.4" D x 58" H
Base: 13.6" W x 22.2" D

- (1) High-Velocity Folded Ribbon AMT Tweeter
- (2) 6" Mid/Bass Drivers
- (3) 6" x 10" Bass Drivers
- (4) 9.5" x 10.5" Passive Radiators
- 1500W peak/750W RMS amp
- Finish: Piano Black



Triton One.R

\$10,000/pair

8" W x 17.4" D x 53.9" H
Base: 12.3" W x 19.8" D

- (1) High-Velocity Reference Folded Ribbon AMT Tweeter
- (2) 5.5" Mid/Bass Drivers
- (3) 5" x 9" Bass Drivers
- (4) 7" x 10" Passive Radiators
- 1500W peak/750W RMS amp
- Finish: Piano Black



Triton Two+

\$7,200/pair

7.3" W x 15" D x 48" H
Base: 11.5" W x 18" D

- High-Velocity Folded Ribbon AMT Tweeter
- (2) 4.5" High-Definition Cast-Basket MVPP Upper Bass/Mid Drivers
- (2) 5" x 9" Bass Drivers
- (2) 7" x 10" Passive Radiators
- 1000W peak/500W RMS amp
- Finish: Black Cloth, Piano Black Top Cap/Base



Triton Five

\$3,900/pair

8.1" W x 12.4" D x 44.3" H
Base: 11" W x 16.5" D

- (1) High-Velocity Folded Ribbon AMT Tweeter
- (2) 6" Mid/Bass Drivers
- (4) 8" Passive Radiators
- Finish: Black Cloth, Piano Black Top Cap/Base



Triton Seven

\$2,900/pair

7.3" W x 11.1" D x 40.3" H
Base: 10.5" W x 14.5" D

- (1) High-Velocity Folded Ribbon AMT Tweeter
- (2) 5.3" High-Definition Cast-Basket Mid/Bass Drivers
- (2) 8" Passive Radiators
- Finish: Black Cloth, Piano Black Top Cap/Base





Triton Reference

Bookshelf/Stand Mount Speakers

The BRX (Bookshelf Reference X) and Aon 3 are compact, high-performance bookshelf speakers carefully designed to provide a large and spacious presentation with superb three-dimensional imaging comparable to that achieved by our award-winning Triton Towers. The BRX earns its "Reference" name by using the 6" MVPP Midrange/Bass Driver and Reference High-Velocity Folded Ribbon (HVFR™) tweeter from the flagship Triton Reference. Lastly, the BRX and Aon 3 employ two side-mounted passive radiators to properly load the bass/midrange drivers for an open, uncolored midrange and well-extended bass.



BRX

\$2,450/pair

8.05" W x 12.3" D x 12.1" H

- (1) High-Velocity Folded Ribbon AMT Tweeter
- (1) 6" Mid/Bass Reference Driver
- (2) 6.5" Passive Radiators
- Finish: Piano Black



Aon 3

\$1,650/pair

9" W x 11" D x 14" H

- (1) High-Velocity Folded Ribbon AMT Tweeter
- (1) 7" Mid/Bass Driver
- (2) 8" Passive Radiators
- Finish: Black Cloth, Piano Black Top Cap/Base



BRX

Subwoofers

Compact, but soul-stirring, GoldenEar's ForceField and SuperSub subwoofers combine subtle musical detail with earth-shaking high-impact bass — all in attractive, room-friendly enclosures. The ForceFields each use a single, forward-firing driver, while the SuperSubs use two inertially-balanced drivers on opposite sides of the cabinet which reduces cabinet resonances, improving performance even further. All GoldenEar subwoofers are designed to be subtle and invisible, allowing a string bass or a fighter jet's roar to seem to come out of nowhere, and to unignorably do their job whether the pluck of a bass guitar or a giant's footsteps are meant to move your soul.

SuperSub XXL

\$3,500/each

19.75" W x 15.9" D x 17.6" H (w/feet)

- (2) 12" Bass Drivers
- (2) 13" x 15" Passive Radiators
- Frequency Response: 25Hz-160kHz
- 2000W peak/1000W RMS amp
- Finish: Piano Black



SuperSub X

\$2,250/each

14" W x 13.25" D x 12.75" H (w/feet)

- (2) 8" Bass Drivers
- (2) 10.5" x 9.5" Passive Radiators
- Frequency Response: 26Hz-160kHz
- 1500W peak/750W RMS amp
- Finish: Piano Black



ForceField 40

\$1,550/each

13.3" W x 18.3" D x 14.7" H (w/feet)

- (1) 10" Bass Driver
- (1) 11" x 13" Passive Radiator
- Frequency Response: 24Hz-170kHz
- 1000W peak/500W RMS amp
- Finish: Satin Black



ForceField 30

\$1,150/each

11.4" W x 16" D x 12.7" H (w/feet)

- (1) 8" Bass Driver
- (1) 9" x 11" Passive Radiator
- Frequency Response: 26Hz-170kHz
- 1000W peak/500W RMS amp
- Finish: Satin Black

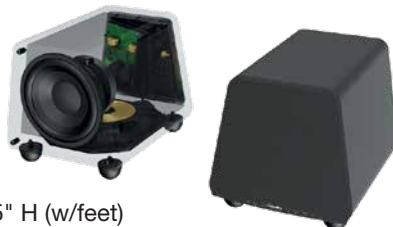


ForceField 3

\$850/each

11.4" W x 15.9" D x 11.5" H (w/feet)

- (1) 8" Bass Driver
- (1) 9" x 11" Passive Radiator
- Frequency Response: 27Hz-150kHz
- 1000W peak/500W RMS amp
- Finish: Matte Black





SuperSub X

SuperCenter Series

Acoustically and cosmetically designed to complement our Triton Towers and Bookshelves, the SuperCenters' sophisticated industrial design is both attractive and functional, minimizing their apparent size as well as enhancing their acoustic performance. Sonically, the SuperCenters employ our High-Velocity Folded-Ribbon (HVFR™) and offer the same naturally detailed, transparent sound all GoldenEar speakers are known for, but with surprising low-frequency extension and power-handling capacity for maximum dynamic range and impact.



SuperCenter Reference

\$2,800/each

35" W x 11" D x 5.75" H

- (1) High-Velocity Folded Ribbon AMT High-Frequency Radiator
- (4) 5.25" Mid/Bass Drivers
- (2) 6.75" x 8" Passive Radiators; One 7" x 10" Passive Planar
- Finish: Black Cloth, Piano Black End Caps



SuperCenter XL

\$1,650/each

28.9" W x 11" D x 5.75" H

- (1) High-Velocity Folded Ribbon AMT High-Frequency Radiator
- (2) 5.25" Mid/Bass Drivers
- (2) 6.75" x 8" Passive Radiators
- Finish: Black Cloth, Piano Black End Caps



SuperCenter X

\$1,100/each

20" W x 11" D x 5.75" H

- (1) High-Velocity Folded Ribbon AMT High-Frequency Radiator
- (2) 5.25" Mid/Bass Drivers
- (1) 7" x 10" Passive Radiator
- Finish: Black Cloth, Piano Black End Caps

Soundbars

SuperCinema 3D Array® soundbars combine the elegant form factor of a soundbar with the enveloping sonic performance that rivals a discrete-speaker surround-sound system. The SuperCinema's unique 3D Array Technology ensures a convincing surround-sound experience, while our High-Velocity Folded-Ribbon (HVFR™) delivers the signature GoldenEar voice. While not required for thrilling performance, 3D Array soundbars are at their best and most immersive when mated to GoldenEar's compact ForceField subwoofers.



3D Array XL

\$2,750/each

62.1" W x 2.9" D x 4.75" H

- (3) High-Velocity Folded Ribbon AMT Tweeters
- (8) 4.5" Mid/Bass Drivers
- Finish: Piano Black



3D Array X

\$1,700/each

49" W x 2.9" D x 4.75" H

- (3) High-Velocity Folded Ribbon AMT Tweeters
- (6) 4.5" Mid/Bass Drivers
- Finish: Piano Black



SuperSat Series

SuperSat® satellites take advantage of our High-Velocity Folded Ribbon (HVFR™) tweeter to ensure that these versatile speakers sing with the same beautiful voice as all GoldenEar speakers. With their slim profiles, threaded wall-mount inserts, and adjustable feet, SuperSat satellite speakers and center-channel loudspeakers are thoughtfully designed to fulfill a wide variety of needs and applications — all with minimal impact on the listening environment itself.



SuperSat 60 and 60C

\$1,495/each

35.1" W x 2.8" D x 4.75" H

- (1) High-Velocity Folded Ribbon AMT Tweeter
- (4) 4.5" Mid/Bass Drivers
- (2) 4" x 7" Passive Radiators
- SuperSat 60: On-Wall/On-Shelf Front Main, Rear Surround
- SuperSat 60C: On-Wall/On-Shelf Center Channel
- Finish: Piano Black



SuperSat 50 and 50C

\$895/each

26.8" W x 2.6" D x 4.75" H

- (1) High-Velocity Folded Ribbon AMT Tweeter
- (2) 4.5" Mid/Bass Drivers
- (2) 4" x 7" Passive Radiators
- SuperSat 50: On-Wall/On-Shelf Front Main, Rear Surround
- SuperSat 50C: On-Wall/On-Shelf Center Channel
- Finish: Piano Black



SuperSat 3 and 3C

\$495/each

4.75" W x 2.8" D x 12.6" H

- (1) High-Velocity Folded Ribbon AMT Tweeter
- (2) 4.5" Mid/Bass Drivers
- SuperSat 3: On-Wall/On-Shelf Front Main, Rear Surround
- SuperSat 3C: On-Wall/On-Shelf Center Channel
- Finish: Piano Black





SuperStand

\$225/pair

- Compatible with GoldenEar SuperSat® 3, SuperSat 50, and SuperSat 60 Speakers
- Two tempered glass bases with rubber feet.
- Pair of stands with interchangeable poles and L-brackets.
Poles for SuperSat 3: 32.5" Tall
Poles for SuperSat 50: 20.5" Tall
Pole for SuperSat 60: 14.3" Tall



Shelf/Table Stands

\$145/pair

- Compatible with SuperSat 50 and SuperSat 60 Speakers.
Shelf/Table Stand 60 Dimensions: Base: 8.9" W x 7.3" D
Shelf/Table Stand 50 Dimensions: 7.5" W x 5.8" D



SuperSwivel

\$75/pair

2.2" W x 3.8" H x 3.5" D

- Swiveling mount aims speakers toward listening position.
- Compatible with GoldenEar SuperSat Speakers and 3D Array® Soundbars.
- Each bracket supports up to 11lbs.

Invisa Series In-Wall/In-Ceiling Speakers

GoldenEar Invisa® Series In-Wall/In-Ceiling Speakers are engineered to deliver superb state-of-the-art sound while seamlessly blending with their surroundings to virtually disappear. All models but the 600 incorporate a High-Velocity Folded-Ribbon (HVFR™) high-frequency radiator like the one found in all GoldenEar Tower, Bookshelf, and Satellite speakers. And all models have complex multi-element crossovers to precisely blend the drivers for seamless, exquisitely natural sound quality. Their looks may be modest and unintrusive, but their sound simply cannot be ignored.

Invisa SPS

\$1,950/each

8" W x 3.2" D x 27.6" H
Square Grille: 8.06" W x 28.3" H
Cutout: 26.55" x 7.14"

- (1) High-Velocity Folded Ribbon AMT Tweeter
- (2) 5.25" Mid/Bass drivers
- (2) 5.25" Lower Mid/Bass drivers



Invisa MPX

\$895/each

7.2" W x 3.7" D x 13.9" H
Square Grille: 7.8" W x 14.5" H
Cutout: 12.74" x 6.27"

- (1) High-Velocity Folded Ribbon AMT Tweeter
- (2) 4.5" Mid/Bass Drivers





Invisa® HTR 8000

\$1,295/each

12.6" Diameter x 5.9" Deep
13.2" Diameter x 5.9" Deep (w/grille)
Cutout: 11.6" Diameter

- (1) Reference High-Velocity Folded Ribbon AMT Tweeter
- (1) 8" Bass/Midrange Driver



Invisa HTR 7000

\$895/each

10" Diameter x 5" Deep
10.5" Diameter x 5" Deep (w/grille)
Cutout: 9" Diameter

- (1) High-Velocity Folded Ribbon AMT Tweeter
- (1) 7" Mid/Bass Driver



Invisa SP 652

\$745/each

8.1" Diameter x 3.4" Deep
8.6" Diameter x 3.5" Deep (w/grille)
Cutout: 7.1" Diameter

- (2) High-Velocity Folded Ribbon AMT Tweeter
- (1) 6.5" Mid/Bass Driver



Invisa SP 650

\$595/each

8.1" Diameter x 3.5" Deep
8.7" Diameter x 3.5" Deep (w/grille)
Cutout: 7.1" Diameter

- (1) Pivotal High-Velocity Folded Ribbon AMT Tweeter
- (1) 6.5" Mid/Bass Driver



Invisa® SP 525

\$495/each

7.2" Diameter x 3.5" Deep
7.7" Diameter x 3.5" Deep (w/grille)
Cutout: 6.2" Diameter

- (1) Pivotal High-Velocity Folded Ribbon AMT Tweeter
- (1) 5.25" Mid/Bass Driver



Invisa® SP 600

\$395/each

8.1" Diameter x 3.5" Deep
Cutout: 7.1" Diameter

- (1) Pivotal Titanium Dome Tweeter with Silk Surround
- (1) 6.5" Mid/Bass Driver



Invisa Square Grilles

Magnetically attached. Specify model.

\$60/pair

Invisa SP 525: 7.7" W x 0.19" D x 7.7" H

Invisa SP 600/650/652: 8.7" W x 0.19" D x 8.7" H

\$80/pair

Invisa HTR 7000: 10.6" W x 0.19" D x 10.6" H

Invisa HTR 8000: 13.2" W x 0.19" D x 13.2" H



Invisa Rough-In Brackets

Contact your local dealer for pricing. Specify model.

Invisa SP 525: 27.9" W x 0.62" D x 7.7" H

Invisa SP 600/650/652: 28.8" W x 0.62" D x 8.6" H

Invisa HTR 7000: 30.7" W x 0.62" D x 10.6" H

Invisa HTR 8000: 33.3" W x 0.62" D x 13.1" H

Invisa MPX: 28.1" W x 0.62" D x 14.6" H

Invisa SPS (vertical install): 28.8" W x 0.62" D x 28.3" H

Invisa SPS (horizontal install): 48.2" W x 0.62" D x 8.9" H



*Golden*Ear™

California, USA • The Netherlands
Tel +1 949.800.1800 • www.goldenear.com