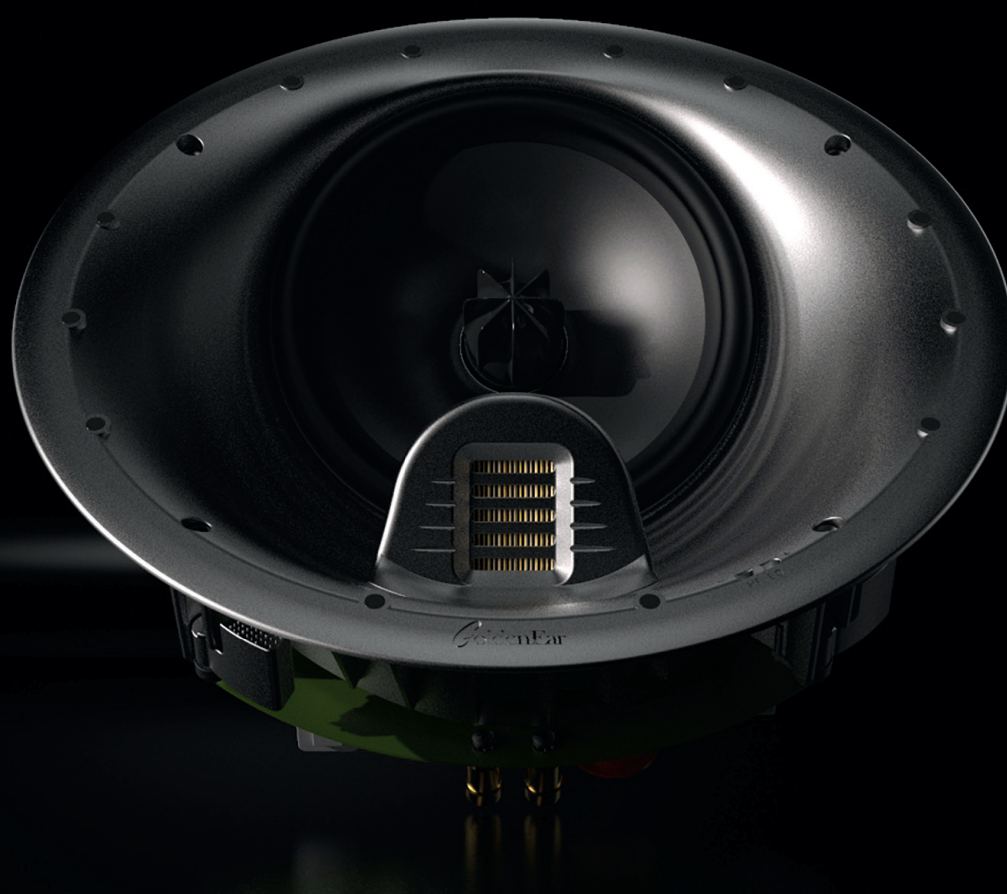


GoldenEar™

NOVEMBER 2022

UK PRODUCT CATALOG



## The GoldenEar Voice

If an audio product were perfect, it would have no sound of its own. It would be invisible. It would have no “voice.” In the real world, DACs, amplifiers, turntables, and especially the transducers — microphones, phono cartridges, and loudspeakers — all have distinct sonic characters.

A competently finessed “voice” comes from consciously managing the sonic effect of every design decision and every part, and then coordinating the combined effect of all those many little imperfections into a whole, creating a voice with as little overt character as possible. At least, that’s the objective for all GoldenEar loudspeakers.

Speaker designers have different intentions as they set about fine-tuning a speaker. Recording studio monitors are often voiced to over-illuminate and intentionally provoke the engineer’s awareness of potential recording flaws, while some other speakers are voiced to grab your attention during the strange, emotional experience of listening while standing in a store.

The real difference between lesser and greater products is in their designers’ intentions, and in their ability to manage inevitable imperfections. Competent voicing doesn’t itself reduce the quantity of the imperfections, but rather it coordinates them into an extremely low-level, ignorable background with no features that shout for attention. That’s the goal shared by all GoldenEar speakers.

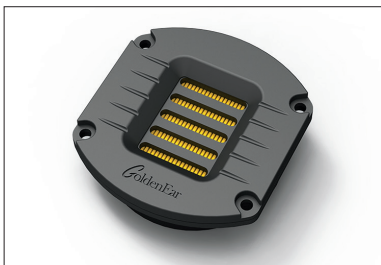


# Technology

Several crucial components appear throughout the line, allowing GoldenEar speakers of all shapes, sizes, and configurations to sing with the same beautiful voice.

## High-Velocity Folded Ribbon (HVFR™) Tweeter

Rather than pushing air like a traditional tweeter, an HVFR tweeter propagates soundwaves and moves the air by squeezing it with its accordion-like pleated diaphragm. Its efficiency, low mass, and large radiating area ensure lower distortion than other tweeter designs in its price range. These HVFR attributes contribute greatly to GoldenEar's effortless sound and 3D imaging. The Triton Reference, One.R, and BRX (Bookshelf Reference X) use a "Reference" version of this tweeter with a larger magnet structure for greater efficiency, control, and lower distortion.



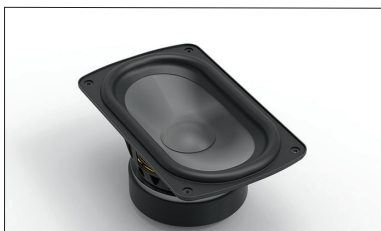
## High-Definition Cast-Basket/MVPP Midrange/Bass Drivers

For this crucial frequency range, nearly all GoldenEar speakers employ open but ultra-rigid cast-basket bass/midrange drivers, often in a D'Appolito array. A Multi-Vaned Phase Plug (MVPP) creates a single radiating surface for a more linear or even response. This technology contributes greatly to the uncoloured sound that is so essential to GoldenEar's voice.



## Quadratic Bass Drivers

With their relatively long, narrow shape, these bass drivers are designed to maximize the cone surface area of GoldenEar's slim and attractive enclosures, which diminish unwanted signal reflections, smearing, and cabinet resonances. When coupled to the built-



in amplification used in Triton's Three+, Two+, One.R, and Reference, these Long-Throw drivers produce powerful but nuanced bass. This highly efficient amp-driver combination also allows even modest audio/video receivers to achieve performance far beyond their rated power output.

## Quadratic and Planar Bass Radiators

Passive radiators are a more sophisticated and costlier alternative to ported designs. Our approach increases the volume of air the bass drivers "see" in the cabinet while greatly minimizing any negative effects and/or stresses within the speaker cabinet itself. Further, when ported woofers are subjected to demanding home-theater material, they can produce an unpleasant "chuffing" sound. This can't happen with a passive radiator — there's no pipe to whistle through. With GoldenEar's Quadratic and Planar Bass Radiator technology, the result is bigger, more muscular bass with fewer artifacts and more nuance.



## Tested by Ear and in our Anechoic Chamber

Every GoldenEar speaker is thoroughly tested both by ear and with our own anechoic chamber modeled after the one found in the world-renowned Nation Research Council in Canada. This allows us to accurately and comprehensively assess optimal driver, cabinet, and crossover specifications for each of our components and finished speakers. Today, there are many means of measuring speaker drivers and completed speakers via computers and analyzers. These test devices strive to "simulate" anechoic response or conditions. Though these tests may save considerable expense and space, there is no adequate substitute for a true anechoic room — the only verifiably controlled and consistent means of testing and optimizing loudspeakers. GoldenEar is one of the few fortunate loudspeaker manufacturers to have an anechoic chamber of its own.



# Triton Series Towers

The Triton Series epitomizes the beauty of the GoldenEar “voice” and clearly expresses our performance-driven value ethos. The Triton Three+ and up are “powered towers” with built-in powered subwoofers. While the bass gets bigger, and more powerful as you move up the line, all Tritons are full-range speakers, and all use GoldenEar’s superb High-Velocity Folded Ribbon (HVFR™) tweeter and MVPP Midrange/Bass drivers. The One.R and Triton Reference employ even more refined “Reference” versions of these drivers. All Tritons deliver superb performance in both two-channel stereo and multi-channel home theater systems with eerily realistic, three-dimensional imaging. Proper attention has been paid to ensure well-extended lows blend seamlessly with their utterly transparent mids and silky-smooth highs.

## Triton Reference

£11,999.00/pair

23.3cm W x 49.4cm D x 147.3cm H  
Base: 34.5cm W x 56.5cm D

- (3) 6" x 10" Bass Drivers
- (4) 9.5" x 10.5" Passive Radiators
- (2) 6" Reference MVPP Mid/Bass Drivers
- (1) High-Velocity Folded Ribbon (HVFR) Reference Tweeter
- 1800W DSP-Controlled Sub Amp
- Finish: Piano Black



## Triton One.R

£7,999.00/pair

20.3cm W x 44.2cm D x 137cm H  
Base: 31.3cm W x 50.3cm D

- (3) 5" x 9" Bass Drivers
- (4) 7" x 10" Passive Radiators
- (2) 5.25" Cast-Basket Reference MVPP Mid/Bass Drivers
- (1) High-Velocity Folded Ribbon (HVFR) Reference Tweeter
- 1600W SuperSub Amplifier
- Finish: Piano Black



## Triton Two+

£4,999.00/pair

18.6cm W x 38.1cm D x 121.9cm H  
Base: 29.3cm W x 45.7cm D

- (2) 5" x 9" Bass Drivers
- (2) 7" x 10" Passive Radiators
- (2) 4.5" Cast-Basket MVPP Mid/Bass Drivers
- (1) High-Velocity Folded Ribbon (HVFR) Tweeter
- 1200W ForceField Amplifier
- Finish: Black Cloth, Piano Black Top Cap/Base



## Triton Three+

£3,299.00/pair

17.8cm W x 32.8cm D x 111.8cm H  
Base: 29.3cm W x 41.2cm D

- (1) 5" x 9" Bass Driver
- (2) 6.75" x 8" Passive Radiators
- (1) 4.5" Cast-Basket MVPP Mid/Bass Driver
- (1) High-Velocity Folded Ribbon (HVFR) Tweeter
- 800W ForceField Amplifier
- Finish: Black Cloth, Piano Black Top Cap/Base



## Triton Five

£2,499.00/pair

20.7cm W x 31.5cm D x 112.5cm H  
Base: 28cm W x 42cm D

- (2) 6" Cast-Basket Mid/Bass Drivers
- (4) 8" Passive Radiators
- (1) High-Velocity Folded Ribbon (HVFR) Tweeter
- Finish: Black Cloth, Piano Black Top Cap/Base



## Triton Seven

£1,999.00/pair

18.5cm W x 28.2cm D x 102.3cm H  
Base: 26.6cm W x 37cm D

- (2) 5.25" Cast-Basket Mid/Bass Drivers
- (2) 8" Passive Radiators
- (1) High-Velocity Folded Ribbon (HVFR) Tweeter
- Finish: Black Cloth, Piano Black Top Cap/Base







**Triton Reference**

# Bookshelf/Stand Mount Speakers

The BRX (Bookshelf Reference X) and Aon 3 are compact, high-performance bookshelf speakers carefully designed to provide a large and spacious presentation with superb three-dimensional imaging comparable to that achieved by our award-winning Triton Towers. The BRX earns its “Reference” name by using a 15cm Cast-Basket Reference Midrange/Bass Driver and Reference High-Velocity Folded Ribbon (HVFR™) tweeter from the flagship Triton Reference. Lastly, the BRX and Aon 3 employ two side-mounted passive radiators to properly load the bass/midrange drivers for an open, uncoloured midrange and well-extended bass.



## BRX

£1,699.00/pair

20.5cm W x 31cm D x 31cm H

- (1) 6" Cast-Basket Reference Mid/Bass Driver
- (2) 6.5" Passive Radiators
- (1) High-Velocity Folded Ribbon (HVFR) Reference Tweeter
- Finish: Piano Black



## Aon 3

£1,099.00/pair

22.9cm W x 28cm D x 35.6cm H

- (1) 7" Cast-Basket MVPP Mid/Bass Driver
- (1) High-Velocity Folded Ribbon (HVFR) Tweeter
- (2) 8" Passive Radiators
- Finish: Black Cloth, Piano Black Top Cap/Base





BRX



# Subwoofers

Compact, but soul-stirring, GoldenEar's ForceField and SuperSub subwoofers combine subtle musical detail with earth-shaking high-impact bass — all in attractive, room-friendly enclosures. The ForceFields each use a single, forward-firing driver, while the SuperSubs use two inertially-balanced drivers on opposite sides of the cabinet which reduces cabinet resonances, improving performance even further. All GoldenEar subwoofers are designed to be subtle and invisible, allowing a string bass or a fighter jet's roar to seem to come out of nowhere, and to unignorably do their job whether the pluck of a bass guitar or a giant's footsteps are meant to move your soul.



## SuperSub XXL

£2,499.00 each

50cm W x 40.5cm D x 44.7cm H (w/feet)

- (2) 12" Bass Drivers
- (2) 13" x 15" Passive Radiators
- Frequency Response: 10Hz-250kHz
- 1600W ForceField Amplifier
- Finish: Piano Black



## SuperSub X

£1,549.00 each

35.6cm W x 33.6cm D x 32.5cm H (w/feet)

- (2) 8" Bass Drivers
- (2) 10.5" x 9.5" Passive Radiators
- Frequency Response: 12Hz-250kHz
- 1400W ForceField Amplifier
- Finish: Piano Black



## ForceField 40

£999.00 each

33.8cm W x 46.6cm D x 37.3cm H (w/feet)

- (1) 10" Bass Driver
- (1) 11" x 13" Passive Radiator
- Frequency Response: 14Hz-250kHz
- 1200W ForceField Amplifier
- Finish: Satin Black



## ForceField 30

£799.00 each

29cm W x 40.6cm D x 32.2cm (w/feet)

- (1) 8" Bass Driver
- (1) 9" x 11" Passive Radiator
- Frequency Response: 18Hz-250kHz
- 1000W ForceField Amplifier
- Finish: Satin Black



## ForceField 3

£599.00 each

28.9cm W x 40.5cm D x 29.2cm H (w/feet)

- (1) 8" Bass Driver
- (1) 9" x 11" Passive Radiator
- Frequency Response: 18Hz-250kHz
- 1000W ForceField Amplifier
- Finish: Matte Black



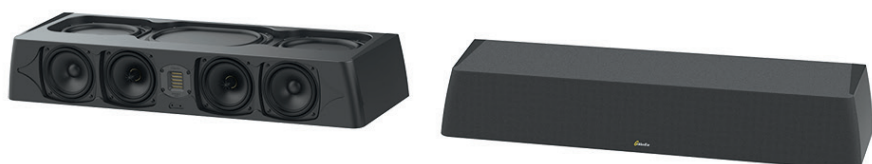


**SuperSub X**



# SuperCenter Series

Acoustically and cosmetically designed to complement our Triton Towers and Bookshelves, the SuperCenters' sophisticated industrial design is both attractive and functional, minimizing their apparent size as well as enhancing their acoustic performance. Sonically, the SuperCenters employ our High-Velocity Folded-Ribbon (HVFR™) and offer the same naturally detailed, transparent sound all GoldenEar speakers are known for, but with surprising low-frequency extension and power-handling capacity for maximum dynamic range and impact.



## SuperCenter Reference

£1,899.00 each

89cm W x 28.2cm D x 14.6cm H

- (4) 5.25" Cast-Basket MVPP Mid/Bass Drivers
- (2) 6.8" Passive Radiators
- (1) 7" x 10" Passive Radiator
- (1) High-Velocity Folded Ribbon (HVFR) Reference Tweeter
- Finish: Black Cloth, Piano Black End Caps



## SuperCenter XL

£1,099.00 each

73.5cm W x 28.1cm D x 14.6cm H

- (2) 5.25" Cast-Basket MVPP Mid/Bass Drivers
- (2) 6.8" Passive Radiators
- (1) High-Velocity Folded Ribbon (HVFR) Tweeter
- Finish: Black Cloth, Piano Black End Caps

## SuperCenter X

£799.00 each

50.8cm W x 28.1cm D x 14.6cm H

- (2) 5.25" Cast-Basket MVPP Mid/Bass Drivers
- (1) 7" x 10" Passive Radiator
- (1) High-Velocity Folded Ribbon (HVFR) Tweeter
- Finish: Black Cloth, Piano Black End Caps



# Soundbars

SuperCinema 3D Array® soundbars combine the elegant form factor of a soundbar with the enveloping sonic performance that rivals a discrete-speaker surround-sound system. The SuperCinema's unique 3D Array Technology ensures a convincing surround-sound experience, while our High-Velocity Folded-Ribbon (HVFR™) delivers the signature GoldenEar voice. While not required for thrilling performance, 3D Array soundbars are at their best and most immersive when mated to GoldenEar's compact ForceField subwoofers.



## 3D Array XL

£1,999.00 each

158cm W x 7cm D x 12cm H

- (8) 4.5" Cast-Basket MVPP Mid/Bass Drivers
- (3) High-Velocity Folded Ribbon (HVFR) Tweeters
- Finish: Piano Black



## 3D Array X

£1,199.00 each

124.5cm W x 7cm D x 12cm H

- (6) 4.5" Cast-Basket MVPP Mid/Bass Drivers
- (3) High-Velocity Folded Ribbon (HVFR) Tweeters
- Finish: Piano Black



# SuperSat Series

SuperSat® satellites take advantage of our High-Velocity Folded Ribbon (HVFR™) tweeter to ensure that these versatile speakers sing with the same beautiful voice as all GoldenEar speakers. With their slim profiles, threaded wall-mount inserts, and adjustable feet, SuperSat satellite speakers and center-channel loudspeakers are thoughtfully designed to fulfill a wide variety of needs and applications — all with minimal impact on the listening environment itself.



## SuperSat 60 and 60C

£999.00 each

89.3cm W x 7.2cm D x 12.1cm H

- (4) 4.5" Cast-Basket MVPP Mid/Bass Drivers
- (2) 4" x 7" Passive Radiators
- (1) High-Velocity Folded Ribbon (HVFR) Tweeter
- SuperSat 60: On-Wall/On-Shelf Front Main, Rear Surround
- SuperSat 60C: On-Wall/On-Shelf Center Channel
- Finish: Piano Black



## SuperSat 50 and 50C

£649.00 each

68cm W x 6.6cm D x 12.1cm H

- (2) 4.5" Cast-Basket MVPP Mid/Bass Drivers
- (2) 4" x 7" Passive Radiators
- (1) High-Velocity Folded Ribbon (HVFR) Tweeter
- SuperSat 50: On-Wall/On-Shelf Front Main, Rear Surround
- SuperSat 50C: On-Wall/On-Shelf Center Channel
- Finish: Piano Black



## SuperSat 3 and 3C

£349.00 each

12.1cm W x 7.2cm D x 32cm H

- (2) 4.5" Cast-Basket MVPP Mid/Bass Drivers
- (1) High-Velocity Folded Ribbon (HVFR) Tweeter
- SuperSat 3: On-Wall/On-Shelf Front Main, Rear Surround
- SuperSat 3C: On-Wall/On-Shelf Center Channel
- Finish: Piano Black





## SuperStand

£169.00/pair

- Compatible with GoldenEar SuperSat® 3, SuperSat 50, and SuperSat 60 Speakers
- Two tempered glass bases with rubber feet.
- Pair of stands with interchangeable poles and L-brackets.  
Poles for SuperSat 3: 82.6cm Tall  
Poles for SuperSat 50: 52.1cm Tall  
Pole for SuperSat 60: 36.4cm Tall



## Shelf/Table Stands

£109.00/pair

- Compatible with SuperSat 50 and SuperSat 60 Speakers.  
Shelf/Table Stand 60 Dimensions:  
Base: 22.6cm W x 18.6cm D  
Shelf/Table Stand 50 Dimensions:  
Base: 19.1cm W x 14.8cm D



## SuperSwivel

£49.00/pair

5.6cm W x 9.7cm H x 8.9cm D

- Swivelling mount aims speakers toward listening position.
- Compatible with GoldenEar SuperSat Speakers and 3D Array® Soundbars.
- Each bracket supports up to 5kgs.



# Invisa Series In-Wall/In-Ceiling Speakers

GoldenEar Invisa® Series In-Wall/In-Ceiling Speakers are engineered to deliver superb state-of-the-art sound while seamlessly blending with their surroundings to virtually disappear. All models but the 600 incorporate a High-Velocity Folded-Ribbon (HVFR™) high-frequency radiator like the one found in all GoldenEar Tower, Bookshelf, and Satellite speakers. And all models have complex multi-element crossovers to precisely blend the drivers for seamless, exquisitely natural sound quality. Their looks may be modest and unintrusive, but their sound simply cannot be ignored.

## Invisa SPS

£1,299.00 each

20.4cm W x 8.2cm D x 70.1cm H  
Square Grille: 20.5cm W x 71.9cm H  
Cutout: 67.5cm x 18.2cm

- (2) 5.25" Cast-Basket MVPP Mid/Bass drivers
- (2) 5.25" Cast-Basket Mid/Bass drivers
- (1) Rotatable High-Velocity Folded Ribbon (HVFR) Tweeter



## Invisa MPX

£649.00 each

18.3cm W x 9.4cm D x 35.3cm H  
Square Grille: 19.8cm W x 36.9cm H  
Cutout: 32.4cm x 16cm

- (2) 4.5" Cast-Basket MVPP Mid/Bass Drivers
- (1) High-Velocity Folded Ribbon (HVFR) Tweeter





### Invisa® HTR 8000

£899.00 each

32cm Diameter x 15cm Deep  
33.5cm Diameter x 15cm Deep (w/grille)  
Cutout: 29.5cm Diameter

- (1) 8" Cast-Basket MVPP Bass/Midrange Driver
- (1) High-Velocity Folded Ribbon (HVFR™) Reference Tweeter



### Invisa HTR 7000

£649.00 each

25.4cm Diameter x 12.7cm Deep  
26.7cm Diameter x 12.7cm Deep (w/grille)  
Cutout: 22.9cm Diameter

- (1) 7" Cast-Basket MVPP Mid/Bass Driver
- (1) High-Velocity Folded Ribbon (HVFR) Tweeter

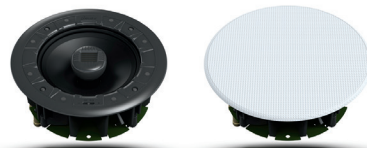


### Invisa SP 652

£499.00 each

20.6cm Diameter x 8.7cm Deep  
21.9cm Diameter x 8.9cm Deep (w/grille)  
Cutout: 18cm Diameter

- (1) 6.5" Mid/Bass Driver
- (2) Pivotable High-Velocity Folded Ribbon (HVFR) Tweeter

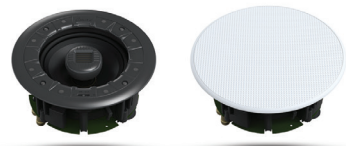


### Invisa SP 650

£399.00 each

20.6cm Diameter x 8.9cm Deep  
22.1cm Diameter x 8.9cm Deep (w/grille)  
Cutout: 18cm Diameter

- (1) 6.5" Cast-Basket Mid/Bass Driver
- (1) Pivotable High-Velocity Folded Ribbon (HVFR) Tweeter

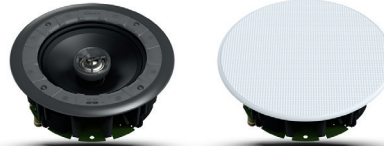


### Invisa® SP 525

£349.00 each

18.3cm Diameter x 8.9cm Deep  
19.6cm Diameter x 8.9cm Deep (w/grille)  
Cutout: 15.8cm Diameter

- (1) 5.25" Cast-Basket Mid/Bass Driver
- (1) 1" Pivotable High-Velocity Folded Ribbon (HVFR) Tweeter



### Invisa® SP 600

£249.00 each

20.6cm Diameter x 8.9cm Deep  
Cutout: 18cm Diameter

- (1) 6.5" Cast-Basket Mid/Bass Driver
- (1) 1" Pivotable Titanium Dome Tweeter with Silk Surround



### Invisa Square Grilles

Magnetically attached. Specify model.

£45.00/pair

Invisa SP 525: 19.6cm W x 0.5cm D x 19.6cm H

Invisa SP 600/650/652: 22.1cm W x 0.5cm D x 22.1cm H

£59.00/pair

Invisa HTR 7000: 27cm W x 0.5cm D x 27cm H

Invisa HTR 8000: 33.6cm W x 0.5cm D x 33.6cm H



### Invisa Rough-In Brackets

Contact your local dealer for pricing. Specify model.

Invisa SP 525: 70.9cm W x 1.6cm D x 19.6cm H

Invisa SP 600/650/652: 73.2cm W x 1.6cm D x 21.9cm H

Invisa HTR 7000: 78cm W x 1.6cm D x 27cm H

Invisa HTR 8000: 84.6cm W x 1.6cm D x 33.3cm H

Invisa MPX: 71.4cm W x 1.6cm D x 37.1cm H

Invisa SPS (vertical install): 73.2cm W x 1.6cm D x 71.9cm H

Invisa SPS (horizontal install): 122.5cm W x 1.6cm D x 22.6cm H



**GoldenEar™**

California, USA • The Netherlands  
Tel +1 949 800 1800 • Tel 01249 848873  
[www.goldenear.com](http://www.goldenear.com)

© November 2022 GoldenEar. All Rights Reserved. Prices and features subject to change.  
For more detailed and most current product information, visit [www.goldenear.com](http://www.goldenear.com).