

# GoldenEar's™ 3D Array® Soundbars

**"Awesome Just Got Redefined"**

– Darryl Wilkinson, *Home Theater Magazine*



**"Nearly flawless; buy it now ... it's both an engineering triumph, and even more importantly, one of those rare products that turns an entire category on its head."**

– Bryan Gardiner, *Wired*

**"Simply spectacular ... stunningly ear-catching ... absolutely unbelievable"**

– Darryl Wilkinson, *Home Theater*

**"Massive soundstage ... made me wonder if I should even bother using tower speakers"**

– Al Griffin, *Sound & Vision*

The SuperCinema 3D Arrays combine the design of an elegant soundbar with the performance of a true high-quality component system. If you are looking for the best sounding soundbar, these are definitely it. Andrew Robinson clearly agreed in HomeTheaterReview.com, "hands down the finest sound bar I've heard..." Dennis Burger of HD Living went even further, and wrote, "it bests many of the better floor-standing tower speakers I've auditioned." And, it is equally superb for music or movies, as Bryan Gardiner raved, "The 3D Array did amazing things for music [and] also performed shockingly well with music."

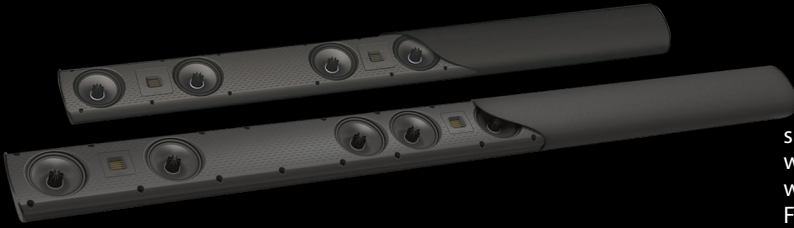
Yes, the critics all raved. Al Griffin of Sound & Vision wrote, "... delivered at least 90% of my main rig's [Triton Two towers] performance. Chris Martens of The Absolute Sound raved, "... a soundbar system so good that audiophiles might buy it for music playback alone ... if asked to recommend a soundbar to please finicky, hypercritical audiophiles, this would be my hands-down choice." And Home Theater's Darryl Wilkinson summed it up perfectly when he wrote, "The width and openness of the soundstage was absolutely incredible" calling it "an instant classic" that is "a must-listen-to, top-of-the-shopping list, sound bar-to-beat ... when it comes to soundbars, awesome just got redefined."



# SuperCinema 3D Array Ultra-High-Performance Soundbars

"A New Gold Standard in Soundbar Systems"

– Bryan Gardiner, *Wired*



The SuperCinema® 3D Array® X and XL are remarkable new loudspeaker systems that combine the elegant form factor of a soundbar with the extraordinary sonic performance of a true surround system. The aesthetically compelling visual appeal of a soundbar is undeniable. Unfortunately, typical passive and active soundbars fail to achieve a truly convincing surround-sound experience when compared to a high-quality, fully discrete 5.1-channel surround system. GoldenEar™ has developed a unique new 3-channel front soundstage soundbar technology that incorporates special 3D image optimization technology to achieve superbly lifelike, wide, deep 3D playback realism with virtually no acoustic coloration.

This technology, pioneered by Sandy Gross, effectively addresses certain problems that have been brought up recently in a 3D audio research project being conducted by Dr. Edgar Choueiri at Princeton University. Dr. Choueiri points out that the crosstalk that exists between the left and right loudspeakers and our contralateral ears, especially when the left and right channels are minimally separated as we normally encounter in soundbar systems, is deleterious to our ability to fully experience and process the imaging cues so necessary for 3D imaging perception. These imaging cues are present in the recordings but dramatically corrupted in typical soundbar playback.

The 3D Array Soundbars incorporate left-, center- and right-channel speakers, plus a second set of drivers that utilize 3D Array Technology to effectively cancel out this crosstalk distortion between the left and right channel. The result is a front soundstage that stretches from wall to wall and beyond, with amazing height, width and depth that effectively envelops the listeners in a true 180-degree plus soundfield, much wider than the actual physical soundbar. All this is contained within a sleek, attractive 2.7" thin enclosure that perfectly complements the latest

super-thin flat panel TVs. Exceptional performance is achieved with or without optional surround speakers. When the 3D Arrays are combined with surrounds (like our SuperSat 3s or Invisas) and a powered GoldenEar ForceField 3 or 4 Subwoofer, the result is a mind-boggling true surround-sound experience that rivals discrete 6-speaker systems. In fact, they actually surpasses all but the very best in the ability to dramatically recreate the realism of a live performance or a cinematic event.

The 3D Array Soundbars incorporate six or eight of GoldenEar's cast spiderleg-basket 4.5" bass-midrange drivers with our unique Multi-Vaned Phase Plugs (MVPP™). In addition, there are 3 of GoldenEar's extraordinary High-Velocity Folded Ribbon tweeters (HVFR™). Both utilize our new, patent pending, Mag-X Coupling™ Crossover Technology, which delivers improved 3D imaging as well as smoother response and greater detail. The 3D Array X is an ideal match for 48" to 60" TVs, the 3D Array XL for 65" - and up TV's. The beautiful piano-gloss-black-finished cabinets are aerospace-grade extruded aluminum with a marble-powder-infused baffle and end-caps. They can be easily wall-mounted using their keyhole mounts or threaded brass inserts, or shelf-mounted using their adjustable rear support.

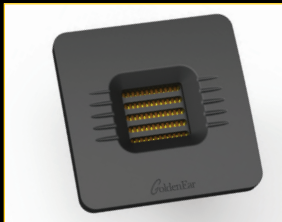
## SUPERCINEMA® 3D ARRAY® X SPECIFICATIONS

**Dimensions:** Speaker: 49-1/8" W x 2-7/8" D x 4-3/4" H. **Frequency Response:** 80 Hz – 35 kHz. **Sensitivity:** 91 dB. **Nominal Impedance:** 4Ω (Compatible with 8Ω). **Driver Complement:** Six 4-1/2" cast spiderleg-basket bass/midrange drivers, Three High-Velocity Folded Ribbon (HVFR™) high-frequency radiators. **Rec. Amp:** 20 – 200 Watt/channel.

## SUPERCINEMA® 3D ARRAY® XL SPECIFICATIONS

**Dimensions:** Speaker: 62-1/8" W x 2-7/8" D x 4-3/4" H. **Frequency Response:** 80 Hz – 35 kHz. **Sensitivity:** 91 dB. **Nominal Impedance:** 4Ω (Compatible with 8Ω). **Driver Complement:** Eight 4-1/2" cast spiderleg-basket bass/midrange drivers, Three High-Velocity Folded Ribbon (HVFR™) high-frequency radiators. **Rec. Amp:** 20 – 300 Watt/channel.

## State-of-the-Art GoldenEar Drivers



High-Velocity Folded Ribbon Tweeter (HVFR™)

- Tweeter Diaphragm is a High Temperature Film
- High-Power Neodymium Magnets
- Squeezes/Pressurizes Air Instead of Pushing It
- Greater Control, Smoother More Extended Response
- Vanishingly Low Distortion
- Dramatically Improved Dynamic Range and Detail
- Superb Dispersion Characteristics
- Superior Impedance Match to Air



High-Definition Cast-Basket Bass/Midrange Drivers

- GoldenEar Multi-Vaned Phase Plug (MVPP) Design
- Rigid Free-Flow Cast-Basket Chassis
- Proprietary Computer Optimized Cone Topology
- High-Gauss Magnet Assembly
- 1" High-Temperature Kapton Former Voice Coil
- Extremely Extended Resonant-Free Linear Frequency Response Characteristics



## Recommended System Components

GoldenEar has engineered and voiced all of our speakers to perfectly complement and match each other in order to give you the greatest flexibility in creating your system.

### SURROUNDS (OPTIONAL)

SuperSat® 3, SuperSat® 50, Invisa® 525, Invisa® 650, Invisa® HTR 7000, Invisa® MPX MultiPolar

### ATMOS HEIGHT (OPTIONAL)

Invisa® 525, Invisa® 650, Invisa® HTR 7000

### SUBWOOFERS

ForceField 3, ForceField 4

**GoldenEar™**

2621 White Road • Irvine, CA 92614  
www.goldenear.com 949-800-1800